




INTERNATIONAL  
CLOTHING & ACCESSORIES  
SUMMER  
09-10



A person with long blonde hair is surfing on a large, powerful wave. The water is a vibrant turquoise color, and the sky is a deep blue with some white clouds. The surfer is wearing a light blue t-shirt. The wave is breaking over a sandy beach with lush green vegetation in the background.

Ocean & Earth links quality, function and fashion seamlessly in a way that reflects the environment we live in, the music we listen to, the art that inspires us, and the fashion we wear. In essence, it is our lifestyle and the differences that bring us together in the ocean and on the earth.

To learn more visit [www.oceanearth.com](http://www.oceanearth.com)

# CONTENTS

MARKETING .....	4
TEAM .....	6

## CLOTHING

BOARDSHORTS .....	14
FREE-FLEX STRETCH .....	16
FOCUS .....	20
EARTH .....	22
REVOLT .....	26
TEES .....	28
FOCUS .....	29
EARTH .....	33
REVOLT .....	34
POLOS .....	36
SHIRTS .....	38
WALKSHORTS .....	40
FOCUS .....	42
EARTH .....	45
REVOLT .....	46
DENIM & PANTS .....	48
ZIP SWEATS .....	50

## ACCESSORIES

STEALTH TRAVEL SERIES .....	52
BACKPACKS .....	58
WALLETS .....	60
BELTS .....	62
CAPS .....	64
CANE & SURF HATS .....	66
TRAVEL NECESSITIES .....	67
FOOTWEAR & SOX .....	68
TOWELS & KEYRINGS .....	70
MASKS & GOGGLES .....	71
O&E INTERNATIONAL .....	72



<<Pic: Morris

POS09407      CAT09\_CLOTHING&ACCESSORIES MENS NPNH  
DESIGNED & PRINTED IN AUSTRALIA



## THE KINETIC PROJECT

2009 has seen O&E's advertising continue its' progressive new direction. This graphic style is a direct representation of our vision known as the Kinetic Project. The feedback we are getting so far, from both industry and consumers, is that this advertising campaign is a total winner. Importantly it has established itself as intelligent, unique and relevant – critical success factors for any campaign. The Kinetic Project is the portrayal of our lifestyle. It builds a narrative that youth want to be a part of, and creates an emotive response to our brand.

The lifestyles that we present are those lived by our sponsored surfers.

Each surfer has their own story, personality and image that is portrayed in the advertising. Photos are largely be shots taken by the surfers and their friends as they live their lives.

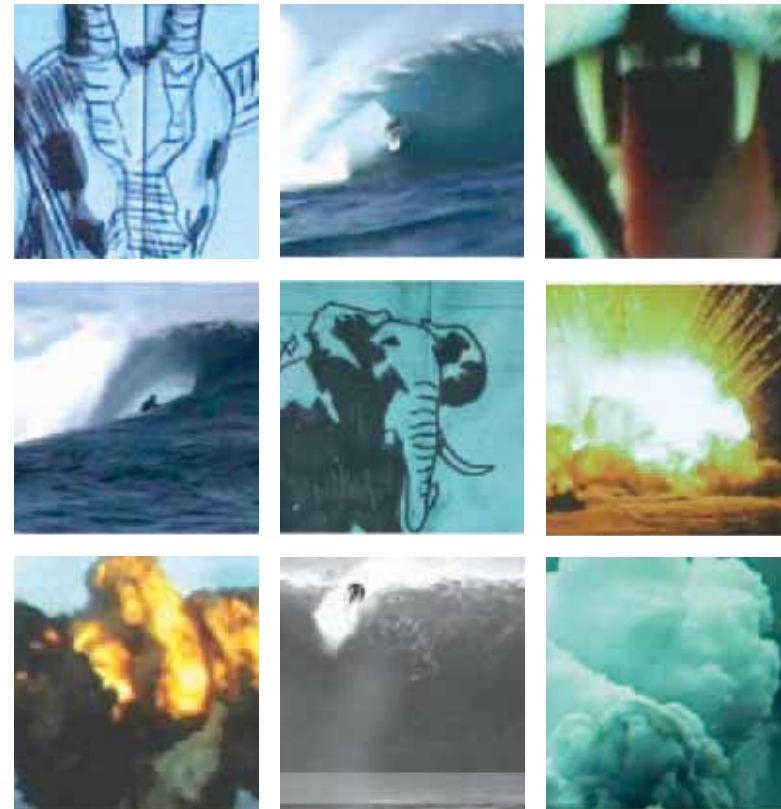
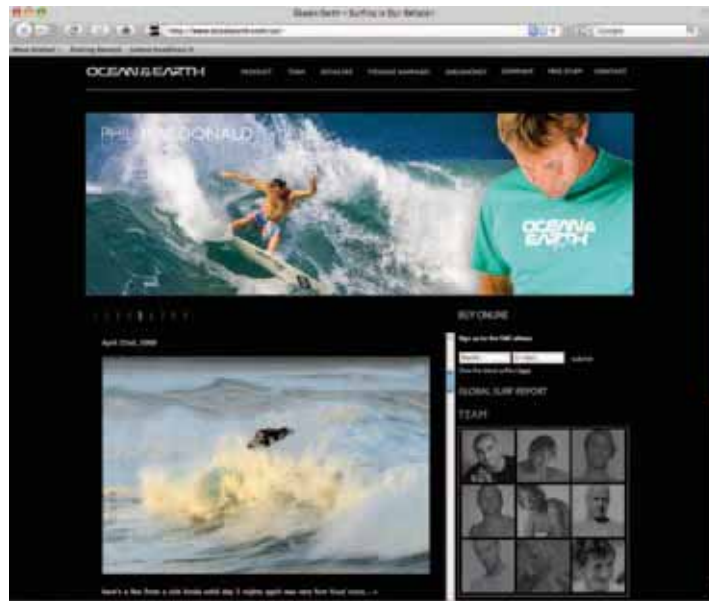
These lifestyles are supported by our apparel's key themes - Revolt, Earth, Focus, and reinforced via the web, which has a similar look and feel.



## OCEAN & EARTH ONLINE

### www.oceanearth.com continues to evolve

Be sure to keep your browser tuned to oceanearth.com to keep yourself in the loop. Whether you need the latest info on events, team riders, products, clothing, competitions... or just a laugh, the O&E website will keep you up to date. With daily blog entries, including our team's new video blogs, the site continues to inform and entertain. On top of the daily updates on the home page, there's also video links to global surfing events and the Teenage Rampage section is constantly being updated with pics and results. There's also a brand new FREE STUFF section that has been attracting a lot of hits from grommets all over the globe.



### KINETIC VIDEO

When you visit the home page at oceanearth.com press play on the video in the top banner and prepare to be blown away.



## TEAM 100%

### Phil MacDonald

One of Australia's most powerful surfers, Macca carves as deep, fast and as vertical as any surfer on the planet. From 2ft to 20ft surf, Macca has an amazing ability to draw maximum power out of any part of the wave. Macca loves the Aussie lifestyle: surfing, meat pies, footy! This powerful naturalfooter, is still as passionate about surfing as any young kid. Loyal to the core, Phil has been sponsored by Ocean & Earth since he was a grommet. His concern for today's groms shows with his inception of the Ocean & Earth Teenage Rampage.

### Mick Campbell

If you were to say you had never heard of the Ginger Ninger then you must have never heard of the world tour and you can't really call your self a surfer. Cambo was looking to hang up the gloves from the world tour this year but with the new dog eat dog format and a few spots opening up at the last minute there was no chance he was going to miss the opportunity to have another crack at it. Cambo may be known as the Aussie larrikin on tour, but with his aggressive style not one of the 45 wants to draw him in a heat ,especially with the new format.

### Anthony Walsh

A surfing nomad, constantly travelling the world in search of the ultimate barrel. Hawaii one week, Tasmania for a few days or Tahiti for a 'Chopes' swell, Walshy is there riding deeper than anyone in his casual tube riding stance. He's the bloke with more barrel time than probably anyone on the planet right now. Keep a look out for his insane backpack camera footage, where he has a camera on a carbon fibre arm sitting over his shoulder while he surfs places like Teahupoo. Its his mission in life to get the Best Barrell Shot Ever. You could say he is the guy with the job everyone wants.

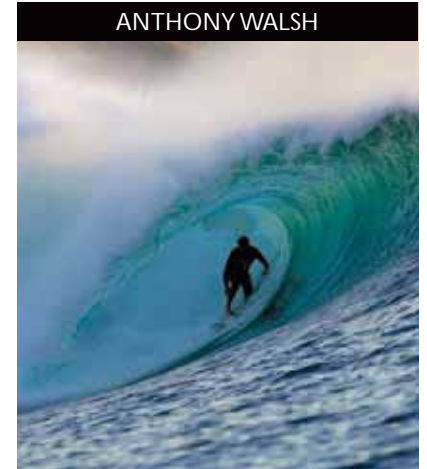
PHIL MACDONALD



MICK CAMPBELL



ANTHONY WALSH



## TEAM 100%

### Shawn Gossmann

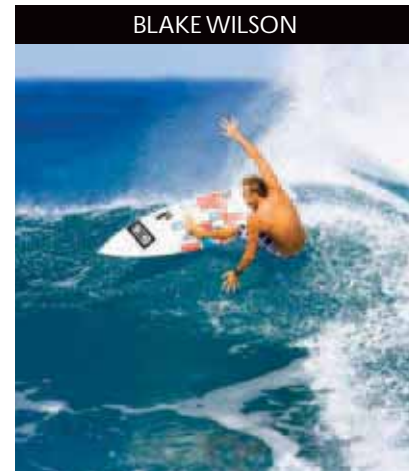
This shredding South African residing on the Gold Coast has an incredible contest history and is building on that with his assault on the WQS. A fast, smooth surfer who comes into his own on the long QLD point breaks. Shawn's reputation has been carved the hard way, all surfing - no hype. His focus is on gaining his rightful membership of the 2010 ASP World Tour and establishing himself as one of the most dynamic and sought after surfers on the global stage.



SHAWN GOSSMANN

### Blake Wilson

1987 Hometown: Sunshine Coast QLD  
Stance: Natural  
Blakes easy going and super friendly personality disappear as soon as he hits the water. The recent season in Hawaii saw this tall lanky shredder from the Sunshine Coast lay some big stylish tracks in solid waves.  
A perennial finalist in the QCC, Blake is steadily headed towards the ASP World Tour. We asked Blake to submit story and pic story for our website... he showed his true colours by hooking straight in to environmental issues.



BLAKE WILSON

### Byron Bartlett

To his mates he's known as Bazza and rumour has it he rode Australia's biggest barrel when he was only 18 (claims Tracks anyway). Not only is he one of Australia's hardest charging surfers but he's lightning fast when it's small. He froths in any condition but his passion (by day) is chasing heavy, shallow slabbing lefts. If this kinda stuff is what you are into then be sure to check out Video Diary 4 Super Tubes where he clocked up 8-9 hours surfing 10 foot plus waves breaking dry on a rock shelf.



BYRON BARTLETT

## JUNIORS

### Sam Lendrum



Still a student, Sam recently came third in the WQS Mark Richards Pro. "Lenny" is a hot up and comer from Nords Wharf near Newcastle on the NSW Central Coast. His first board was a old single fin Shane and he was just frothing on the fact that he had his own fibreglass board. A few boards after his first Shane and he is now rated #8 on the Pro Junior ratings and is pumped for the rest of the year. Lenny is single and he rips so check him out.

### Matt Poul

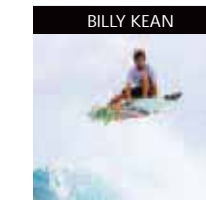


Matt is a smooth shredder from Curl Curl. He is a young bloke with big ideas, on a mission to see and do everything life has to offer... as indicated by a recent fence-jump to get into Daft Punk whilst getting chased by security. Definitely following in Kevin Rudd's footsteps, Matt loves nothing but hanging, partying, traveling and surfing with boys, listening to the Spice Girls, shaving his eyebrows and having pillow fights with his grandma. Watch this kid, he is getting around.

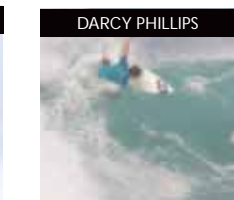
### Max Ayshford, Billy Kean, Darcy Phillips



MAX AYSHFORD



BILLY KEAN



DARCY PHILLIPS



## LONGBOARD

Jackson Close, Grant Thomas

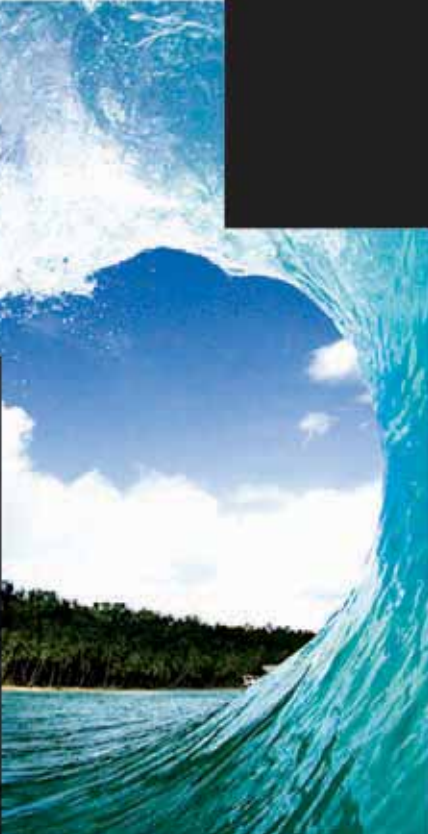
## WAKE

Josh Sanders, Sam Thomson, Sam Aiken



**FOCUS**

An exploration in branding, logo and graphic.







TIP OFF  
CMBS04309



MICK CAMPBELL

CROSSROAD  
CMTS04309  
HOUNDED  
CMWS21309



PHIL MACDONALD

PRIORITY  
CMBS01109



MATT POUL

VISIONARY  
CMTS21309



PRIORITY  
CMTS05309



# EARTH

When Nature fights back... Earth is a reconnection with nature and aesthetic. It is a graphic contemplation about our modern world and it's environment.





DEPTH CHARGER  
CMBS17109



BOTTOM LINE  
CMBS08309



SPECIES  
CMBS10309



BONES  
CMTS10309  
IN A STATE  
CMPA06309



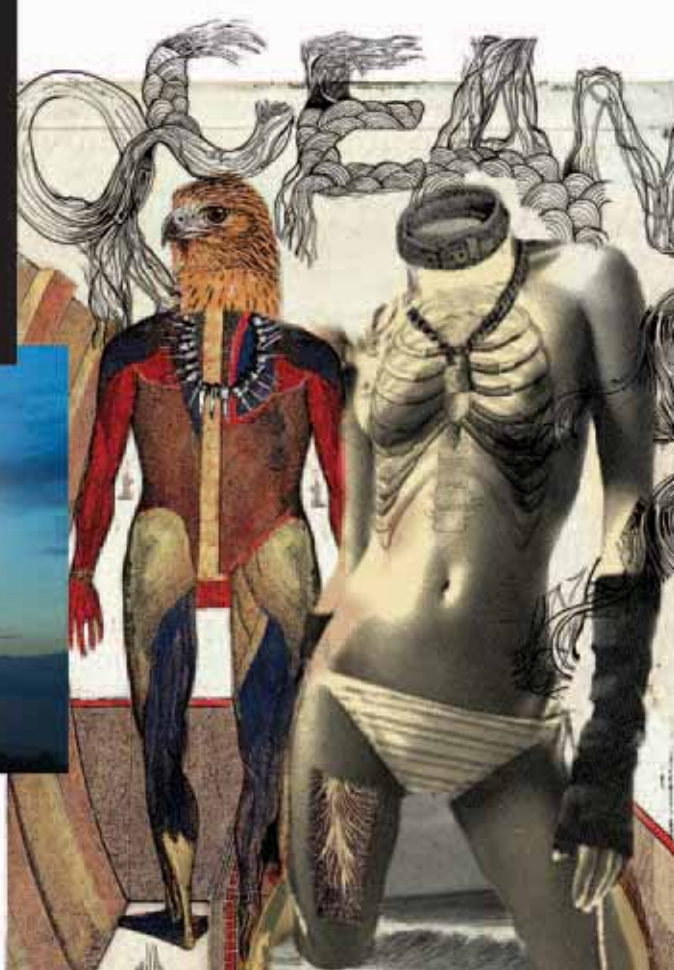
AQUARIUM  
CMTS01309

Ocean and  
earth/earth



# REVOLT

A statement against all that is tame, archaic and boring. Revolt is aggressive art and dark humour. It is high volume. Revolt is for the midnight hour.





IMPRESSION  
CMBS07309



EXTENSION  
CMTS03309  
GRILLER  
CMWS11309



VICIOUS  
CMTS23309  
OUT OF LINE  
CMWS14309



ABORT  
CMTS26309  
TRANSMITTER  
CMWS03309

# BOARDSHORTS



## LEG LENGTH STYLE GUIDE

18"

Youthful, stylish! The modern take from the eighties.

19"

Still on edge and plenty of cool air for ventillating where it matters.

20"

The compromise of cool style and function. Even cooler when you don't catch your knees.

21"

The roomy street fit. The length of the last decade.



**4X WAY  
FREE-FLØX**

The closest thing to surfing nude.

The 4x way free-flex are the most flexible boardies on the market. These are the ultimate high performance surfing boardshorts.

Available:

CMBS11309 WARP

CMBS12309 PINNED DOWN

**2X WAY  
FREE-FLØX**

Flexible, durable freedom.

The 2x way free-flex boardies are the perfect compromise of performance and durability.

Available:

CMBS09309 WAKE UP

CMBS13309 LOOSEN UP

CMBS15309 NOISY

CMBS06309 X-RAY

CMBS13109 TELL TAILS



OCEAN & EARTH  
**FREE-FLØX**

The ultimate high performance boardshorts



# FREE-FLEX STRETCH BOARDSHORTS



BLACK



BROWN

## WARP 4xWAY FREE-FLEX

CMBS11309

4xWay Stretch "FREE FLEX" Polyester /ElasTane  
Sizes Available: 28, 30, 32, 33, 34, 36,38

COBS11309

BIG MENS

Sizes Available: 40, 42

20"

4xWAY  
FREE-FLEX

## WARP 4xWAY FREE-FLEX

CMBS99309

4xWay Stretch "FREE FLEX" Polyester /ElasTane  
Sizes Available: 28, 30, 32, 33, 34, 36,38

COBS99309

BIG MENS

Sizes Available: 40, 42

18"

4xWAY  
FREE-FLEX





NAVY



BLACK



BLACK



WHITE

**NOISY** 2xWAY FREE-FLEX  
CMBS15309

2xWay Stretch "FREE FLEX" Polyester  
Sizes Available: 28, 30, 32, 33, 34, 36,38

COBS15309 BIG MENS  
Sizes Available: 40, 42

21"

**2xWAY  
FREE-FLEX**

**WAKE UP** 2xWAY FREE-FLEX  
CMBS09309

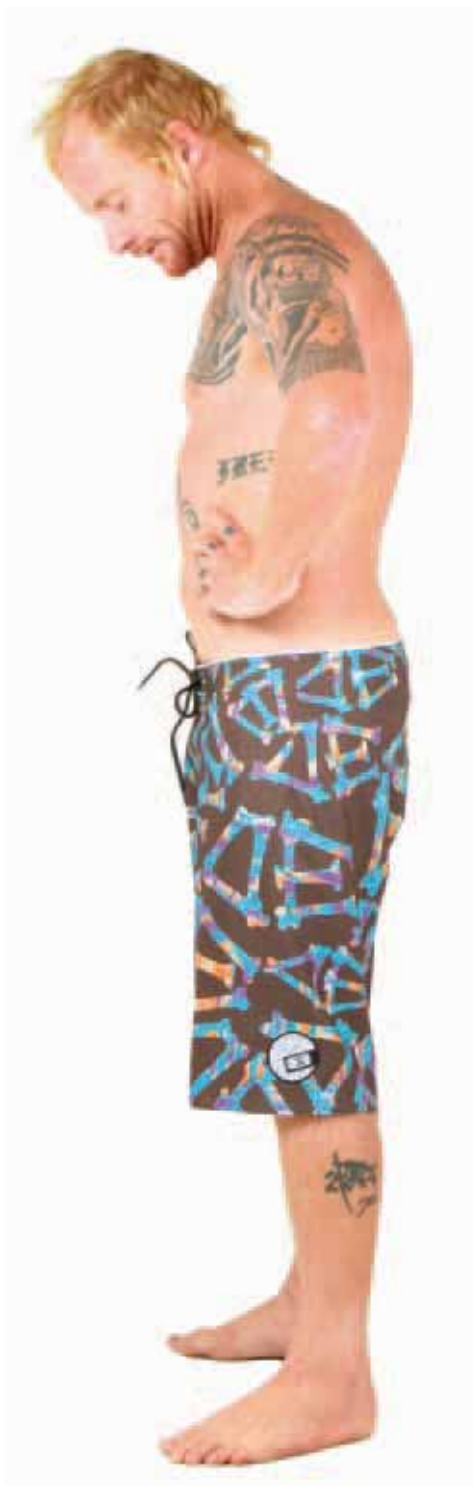
2xWay Stretch "FREE FLEX" Polyester  
Sizes Available: 28, 30, 32, 33, 34, 36,38

COBS09309 BIG MENS  
Sizes Available: 40, 42

21"

**2xWAY  
FREE-FLEX**





COFFEE



BLACK

**X-RAY** 2xWAY FREE-FLEX  
CMBS06309

2xWay Stretch "FREE FLEX" Polyester  
Sizes Available: 28, 30, 32, 33, 34, 36,38

COBS06309  
Sizes Available: 40, 42

BIG MENS

20"

**2xWAY  
FREE-FLEX**



SAM LENDRUM  
pic: morris



BLACK

**TELL TAILS** 2xWAY FREE-FLEX

CMBS13109

Poly Micro

Sizes Available: 28, 30, 32, 33, 34, 36, 38

COBS13109

BIG MENS

Sizes Available: 40, 42

20"

2xWAY  
FREE-FLEX



# FOCUS BOARDSHORTS

An exploration in branding, logo and graphic.



BLACK



WHITE



BLUE



INK



BLACK

## PRIORITY 20"

CMBS01109  
Poly Micro Suede  
Sizes Available: 28, 30, 32, 33, 34, 36,38

COBS01109 BIG MENS  
Sizes Available: 40, 42

## TIP OFF 21"

CMBS04309  
Poly Micro  
Sizes Available: 28, 30, 32, 33, 34, 36,38

COBS04309 BIG MENS  
Sizes Available: 40, 42



NAVY



BLACK



GREY

## ALL ROUNDER

CMBS03309

Poly Micro. Elastic Waist With Side Pockets  
Sizes Available: 28, 30, 32, 33, 34, 36, 38

COBS03309

BIG MENS

Sizes Available: 40, 42

20"



BOBBY MARTINEZ

pic: jones/stryker

# EARTH BOARDSHORTS

When nature fights back... Earth is a reconnection with nature and aesthetic. It is a graphic contemplation about our modern world and it's environment



BLUE

SAVANNAH 20"

CMBS16309

Poly Twill

Sizes Available: 28, 30, 32, 33, 34, 36, 38

COBS16309

BIG MENS

Sizes Available: 40, 42



BLUE

## DEPTH CHARGER

CMBS17109

Poly Micro

Sizes Available: 28, 30, 32, 33, 34, 36, 38

20"

COBS17109

BIG MENS

Sizes Available: 40, 42



PHIL MACDONALD

pic: chlds



BLACK

**BOTTOM LINE** 20"

CMBS08309

Poly Twill

Sizes Available: 28, 30, 32, 33, 34, 36, 38

COBS08309

BIG MENS

Sizes Available: 40, 42





RED



GREEN

**SPECIES** 20"

CMBS10309

Cotton Calico, Enzyme Wash

Sizes Available: 28, 30, 32, 33, 34, 36, 38

COBS10309 BIG MENS

Sizes Available: 40, 42

**SPECIES** 18"

CMBS95309

Cotton Calico, Enzyme Wash

Sizes Available: 28, 30, 32, 33, 34, 36, 38

COBS95309 BIG MENS

Sizes Available: 40, 42



# REVOLT BOARDSHORTS

A statement against all that is tame, archaic and boring.  
Revolt is aggressive art and dark humour. It is high  
volume. Revolt is for the midnight hour.



RED



BLUE

## IMPRESSION

20"

CMBS07309

ECO Fabric - 100% Recycled Polyester Twill

Sizes Available: 28, 30, 32, 33, 34, 36, 38

COBS07309

BIG MENS

Sizes Available: 40, 42



MICK CAMPBELL  
pic: morris

# TEES



## REGULAR FIT

Is a proven and popular fit that combines a comfortable body cut, with loose sleeve openings and a broader neck rib. It comes in 130gm and 160gm combed cotton jersey.



## SLIM FIT

As fashion tees become progressively looser, our slim tee shape combines the regular tee shape with a more fitted sleeve cut and opening and a broader neck line. The slim tee has a narrower neck rib. It comes in 130gm and 160gm weights and a mixture of cotton and polycotton blends.

# FOCUS TEES

An exploration in branding, logo and graphic.



ICE



GREEN



NAVY



CHARCOAL

## PRIORITY

CMTS05309

160g Cotton Jersey

Sizes Available: XS, S, M, L, XL

## REGULAR

COTS05309

BIG MENS

Sizes Available: 2XL, 3XL, 4XL





WHITE



BLACK



ASH

**AWOL**

CMTS07309

160g Cotton Jersey

Sizes Available: XS, S, M, L, XL

COTS07309

BIG MENS

Sizes Available: 2XL, 3XL, 4XL

REGULAR



MIST



CHARCOAL

**ESCAPE**

CMTS29309

160g Cotton Jersey

Sizes Available: XS, S, M, L, XL

COTS29309

BIG MENS REGULAR

Sizes Available: 2XL, 3XL, 4XL

REGULAR



ICE



CHARCOAL



BLACK



LIGHT GREY MARLE

**MISFIT** REGULAR

CMTS31309  
160g Cotton Jersey  
Sizes Available: XS, S, M, L, XL

COTS31309 BIG MENS REGULAR  
Sizes Available: 2XL, 3XL, 4XL

**CROSSROAD** REGULAR

CMTS04309  
160g Cotton Jersey, Garment Wash  
Sizes Available: XS, S, M, L, XL

COTS04309 BIG MENS  
Sizes Available: 2XL, 3XL, 4XL





CHARCOAL



WHITE

**VISIONARY**

CMTS21309

160g Cotton Jersey, Garment Wash  
Sizes Available: XS, S, M, L, XL

REGULAR

COTS21309

BIG MENS REGULAR

Sizes Available: 2XL, 3XL, 4XL



NAVY

**PATRIOT**

CMTS13309

160g Cotton Jersey, Garment Wash  
Sizes Available: XS, S, M, L, XL

REGULAR

COTS13309

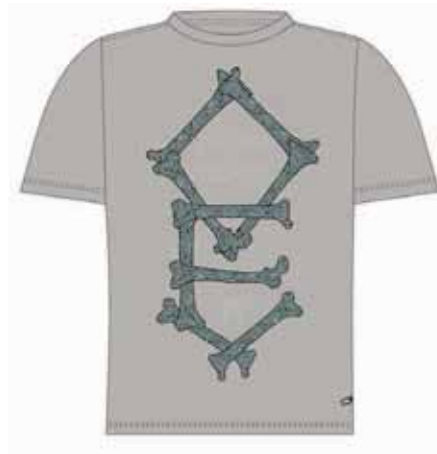
BIG MENS REGULAR

Sizes Available: 2XL, 3XL, 4XL





When nature fights back... Earth is a reconnection with nature and aesthetic. It is a graphic contemplation about our modern world and it's environment



GREY



WHITE



CHARCOAL

**BONES**

CMTS10309

130g Cotton Jersey

Sizes Available: XS, S, M, L, XL

COTS10309

BIG MENS REGULAR

Sizes Available: 2XL, 3XL, 4XL

SLIM

**AQUARIUM**

CMTS01309

130g Cotton Poly Jersey, Garment Wash

Sizes Available: XS, S, M, L, XL

COTS01309

BIG MENS REGULAR

Sizes Available: 2XL, 3XL, 4XL

SLIM

# REVOLT TEES

A statement against all that is tame, archaic and boring.  
Revolt is aggressive art and dark humour. It is high  
volume. Revolt is for the midnight hour.



BROWN



NAVY

## ABORT

CMTS26309

130g Cotton Poly Jersey, Garment Wash  
Sizes Available: XS, S, M, L, XL

SLIM

COTS26309

BIG MENS REGULAR

Sizes Available: 2XL, 3XL, 4XL





WHITE



GREEN



MIST



ASH



NAVY

**VICIOUS**

SLIM

CMTS23309

130g Cotton Poly Jersey, Garment Wash

Sizes Available: XS, S, M, L, XL

COTS23309

BIG MENS REGULAR

Sizes Available: 2XL, 3XL, 4XL

**EXTENSION**

SLIM

CMTS03309

130g Cotton Poly Jersey

Sizes Available: XS, S, M, L, XL

COTS03309

BIG MENS REGULAR

Sizes Available: 2XL, 3XL, 4XL

**RANSOM**

SLIM

CMTS27309

130g Cotton Jersey, Enzyme Wash

Sizes Available: XS, S, M, L, XL

COTS27309

BIG MENS REGULAR

Sizes Available: 2XL, 3XL, 4XL

# POLOS



NAVY



WHITE



WHITE



NAVY

## SKEW

CMPO01309

220g Cotton Pique, Garment Wash

Sizes Available: XS, S, M, L, XL

SLIM

COPO01309

BIG MENS REGULAR

Sizes Available: 2XL, 3XL, 4XL

## GLORY

CMPO02309

Cotton SLUB Jersey, Garment Wash

Sizes Available: XS, S, M, L, XL

SLIM

COPO02309

BIG MENS REGULAR

Sizes Available: 2XL, 3XL, 4XL



ANTHONY WALSH  
pic: gibson

# SHIRTS



BLACK



WHITE

## GRIDLOCK

CMSH02309

Cotton

Sizes Available: XS, S, M, L, XL

COSH02309

BIG MENS

Sizes Available: 2XL, 3XL, 4XL





WHITE



BLACK



BLACK



BLACK



BLUE

**RAVAGE**

CMSH03309

Cotton

Sizes Available: XS, S, M, L, XL

COSH03309

BIG MENS

Sizes Available: 2XL, 3XL, 4XL

**CHECK IN**

CMSH04309

Cotton

Sizes Available: XS, S, M, L, XL

COSH04309

BIG MENS

Sizes Available: 2XL, 3XL, 4XL

**ATMOSPHERE LONG SLEEVE**

CMSH05309

Cotton

Sizes Available: XS, S, M, L, XL

COSH05309

BIG MENS

Sizes Available: 2XL, 3XL, 4XL

# WALKSHORTS



## STRAIGHT FIT

A youthful, modern and tapered fit, giving a slimmer Rock'n Roll silhouette.



## REGULAR FIT

A roomy, classic fit with a broader leg opening. Generally leg lengths are longer.



# WALKSHORT FABRIC & COLOURWAY SUMMARY



# FOCUS WALKSHORTS

An exploration in branding, logo and graphic.



NAVY



GRAPE



STONE



BLACK



BLACK



GREY

## ACADEMY

CMWS01309

Stretch Cotton Drill

Sizes Available: 28, 30, 32, 33, 34, 36,38

## 20" REG

COWS01309

BIG MENS

Sizes Available: 40, 42

## RACECOURSE

CMWS22309

Poly Viscose Yarn Dyed Check

Sizes Available: 28, 30, 32, 33, 34, 36,38

## 21" REG

COWS22309

BIG MENS

Sizes Available: 40, 42



STONE



BLACK

**HURDLES** 20" STRAIGHT

CMWS05309

Printed PolyCotton Drill

Sizes Available: 28, 30, 32, 33, 34, 36, 38

COWS05309

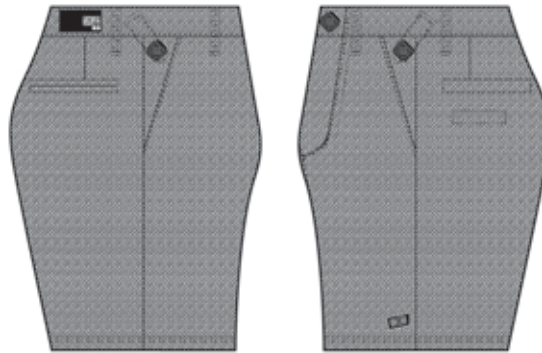
BIG MENS

Sizes Available: 40, 42





BROWN



GREY



KHAKI



NAVY



GREY

**STATIC** 20" STRAIGHT

CMWS02309  
PolyCotton Yarn Dyed Pin Stripe  
Sizes Available: 28, 30, 32, 33, 34, 36,38

COWS02309 BIG MENS  
Sizes Available: 40, 42

**HOUNDED** 20" STRAIGHT

CMWS21309  
Cotton Gingham Check  
Sizes Available: 28, 30, 32, 33, 34, 36,38

COWS21309 BIG MENS  
Sizes Available: 40, 42

**MONSOON** 22" REG

CMWS23309  
Light Cotton Twill , Enzyme Wash  
Sizes Available: 28, 30, 32, 33, 34, 36,38

COWS23309 BIG MENS  
Sizes Available: 40, 42



When nature fights back... Earth is a reconnection with nature and aesthetic. It is a graphic contemplation about our modern world and it's environment



BLACK/WHITE



BLACK

**CHECKOUT** 20" STRAIGHT

CMWS13309  
Matte Cotton Herringbone Yarn Dyed Check  
Sizes Available: 28, 30, 32, 33, 34, 36,38

COWS13309 BIG MENS  
Sizes Available: 40, 42

**OUT OF LINE** 20" STRAIGHT

CMWS14309  
Printed Cotton Canvas  
Sizes Available: 28, 30, 32, 33, 34, 36,38

COWS14309 BIG MENS  
Sizes Available: 40, 42

# REVOLT WALKSHORTS

A statement against all that is tame, archaic and boring.  
Revolt is aggressive art and dark humour. It is high  
volume. Revolt is for the midnight hour.



COFFEE



STEEL

## AGENDA

CMWS06309

PolyCotton Fleck Twill

Sizes Available: 28, 30, 32, 33, 34, 36,38

## 20" STRAIGHT

## LOG ON

CMWS09309

Printed Cotton Canvas

Sizes Available: 28, 30, 32, 33, 34, 36,38

## 20" REG



BLUE



INDIGO

**COTTON MOUTH**      **20" STRAIGHT**

CMWS08309

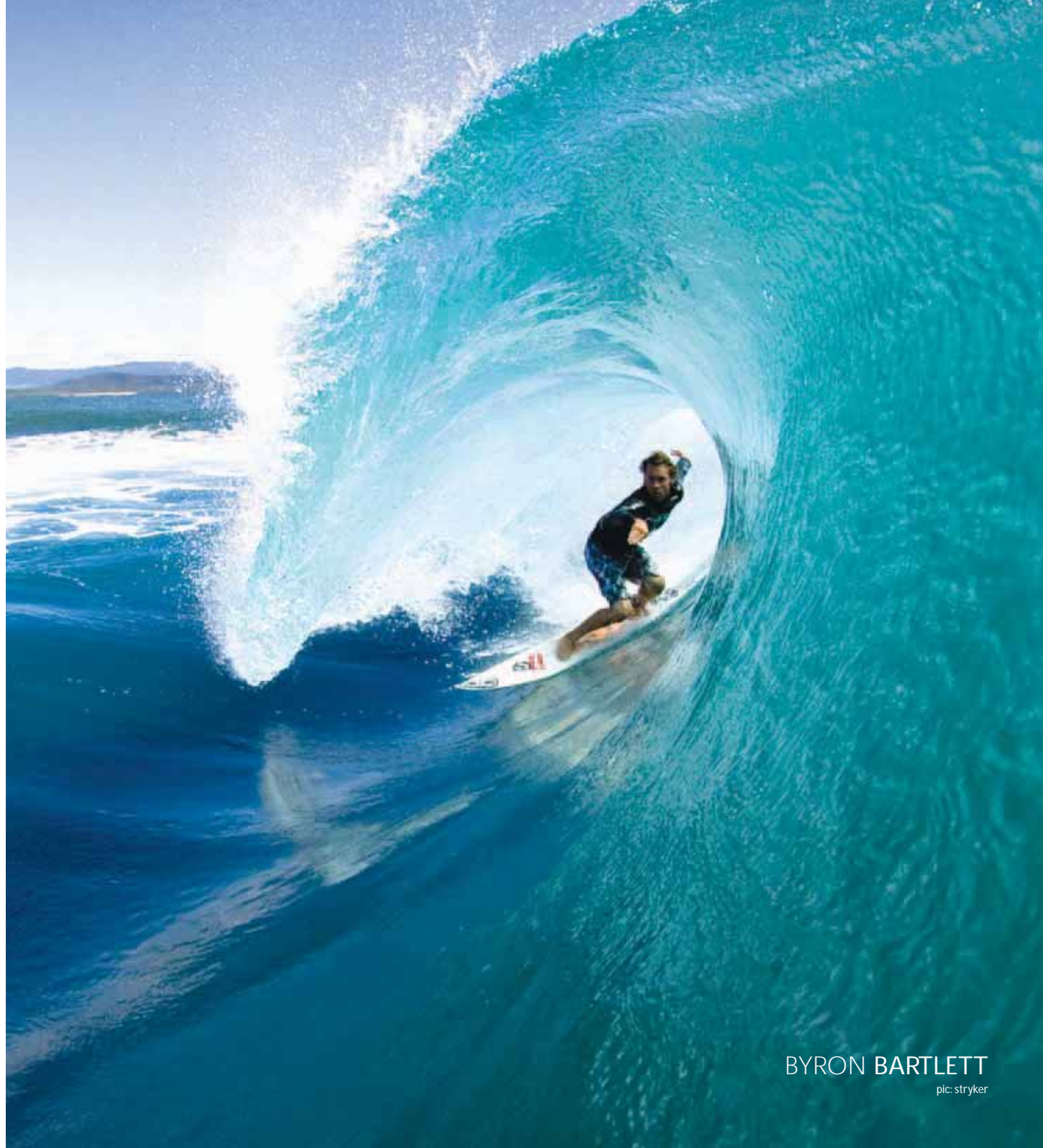
Cotton Denim

Sizes Available: 28, 30, 32, 33, 34, 36, 38

COWS08309

BIG MENS

Sizes Available: 40, 42



BYRON BARTLETT

pic: stryker

# DENIM AND PANTS



NAVY



BURGUNDY

## CONSTITUTE

STRAIGHT

CMPA01309

Cotton Corduroy

Sizes Available: 28, 30, 32, 33, 34, 36,38

COPA01309

BIG MENS

Sizes Available: 40, 42







STONE



TAN



ICE



NAVY



BLACK

**PARALLEL**

STRAIGHT

CMPA03309

Stretch Cotton Drill

Sizes Available: 28, 30, 32, 33, 34, 36,38

COPA03309

BIG MENS

Sizes Available: 40, 42

**ESCAPEE**

STRAIGHT

CMPA04309

Cotton TextuRed Yarn Dyed Pin Stripe

Sizes Available: 28, 30, 32, 33, 34, 36,38

COPA04309

BIG MENS

Sizes Available: 40, 42

**IN A STATE**

STRAIGHT

CMPA06309

Cotton Denim, Washed

Sizes Available: 28, 30, 32, 33, 34, 36,38

COPA06309

BIG MENS

Sizes Available: 40, 42

# ZIP SWEATS



TEAL



GREEN

## CHEMISTRY

OECMZS0329 Slim Fit  
320g Cotton Slub Unbrushed Fleece  
Sizes Available: S, M, L, XL





BLACK



BROWN



BLACK



BLUE



CHARCOAL



GREY

**NEW WAVE**

OECMZS1429 Reg Fit  
330g Polycotton Brushed Fleece  
Sizes Available: S, M, L, XL

**BROKEN**

OECMZS0129 Reg Fit  
330g Polycotton Brushed Fleece  
Sizes Available: S, M, L, XL

**CREEP**

OECMZS1129 Slim Fit  
330g Polycotton Brushed Fleece  
Sizes Available: S, M, L, XL

# TRAVEL SERIES

7 ( % % , " ! ' 3 s # ! 2 2 9 / . " ! ' 3 s ' % ! 2 " 5 " ! " 3 ' 3 " !

Exploration, crossing new terrain, surfing unknown waters. The instinct to travel is a driving part of every surfer's life. Our travel bags & backpacks are always up for the ride.



# STEALTH TRAVEL SERIES



DK GREY

## STEALTH SUPER SONIC

AMTS05109

Polyester Twill

PK 6

- Huge size wheel bag
- Split-level zip design for easy access
- 2 main compartments
- O&E printed inside lining
- Retractable handle & load compression straps
- High quality inline skate wheels
- Locking zip heads on main compartment
- 125 Litres



DK GREY

## STEALTH MILE HIGH

AMTS06109

Polyester Twill

PK 6

- Medium to large size wheel bag
- Split-level zip design for easy access
- 2 main compartments
- O&E printed inside lining
- Retractable handle & load compression straps
- High quality inline skate wheels
- Locking zip heads on main compartment
- 100 Litres



DK GREY

### STEALTH TRANSIT

AMTS07109

Polyester Twill  
PK 6

- ⊞ Medium size wheel bag
- ⊞ Split-level zip design for easy access
- ⊞ 2 main compartments
- ⊞ O&E printed inside lining
- ⊞ Expandable compartment
- ⊞ Retractable handle & load compression straps
- ⊞ High quality inline skate wheels
- ⊞ Locking zip heads on main compartment
- ⊞ Multiple external pockets
- ⊞ 85 Litres



DK GREY

### STEALTH VENTURA

AMTS08109

Polyester Twill  
PK 6

- ⊞ Travel bag with wheels
- ⊞ High quality inline skate wheels
- ⊞ U shape top zip for easy access
- ⊞ O&E printed inside lining
- ⊞ Three wet/ dry gear compartments
- ⊞ Locking zip heads on main compartment
- ⊞ Multiple external pockets
- ⊞ 100 Litres



DK GREY

### STEALTH GEAR BAG

AMTS09109

Polyester Twill  
PK 12

- ⊞ Wet/ dry gear bag
- ⊞ Large main compartment
- ⊞ U shaped top zip for easy access
- ⊞ O&E printed inside lining
- ⊞ Side & end pockets
- ⊞ Removable shoulder strap
- ⊞ 45 Litres



DK GREY

## STEALTH BACKPACK

AMTS10109

Polyester Twill  
PK 12

- Large double zip wet/ dry pack
- A4 compatible
- Padded Laptop compartment
- O&E printed inside lining
- Padded airflow back
- Curved mesh padded shoulder straps
- Large side pockets
- Full harness system with stash pockets
- Stationary organizer and key clip
- ipod compatible



DK GREY

## STEALTH SATCHEL

AMTS11109

Polyester Twill  
PK 12

- Saddle style bag design
- Multiple compartments
- Padded Laptop sleeve
- O&E printed inside lining
- Adjustable mesh padded shoulder strap
- Mobile phone pocket
- 10 Litres



DK GREY

## STEALTH BUM BAG

AMTS12109

Polyester Twill  
PK 12

- Twin pockets
- Adjustable waist strap
- O&E printed inside lining



DK GREY

### STEALTH TRAVEL KIT

AMTS13109

Polyester Twill

PK 12

- § Ultimate Travel companion
- § Multiply clear & mesh compartments
- § Hanging strap
- § O&E printed inside lining
- § Folds up into secure case
- § Ideal for all surfing accessories- Leashes, fins, wax etc



DK GREY

### STEALTH TOILET BAG

AMTS14109

Polyester Twill

PK 12

- § Large main compartment
- § External front pocket
- § Hanging hook
- § O&E printed inside lining
- § Mirror



DK GREY

### STEALTH TRAVEL WALLET

AMTS15109

Polyester Twill

PK 12

- § Plenty of internal pockets
- § External boarding pass & ticket sleeves
- § Wrist strap for added security
- § O&E printed inside lining
- § Travelers best mate



DK GREY

### STEALTH PASSPORT HOLDER

AMTS16109

Polyester Twill

PK 12

- § Boarding pass & ticket sleeves
- § Wrist strap for added security
- § O&E printed inside lining





MATT POUL  
pic: morris

# BACKPACKS



BLACK



BROWN

## VOYAGER

AMBP11109

Dobby, Twill

PK 12

- ⌘ Large double zip pack
- ⌘ Padded Lap Top compartment
- ⌘ A4 compatible
- ⌘ Airflow padded back
- ⌘ Curved padded shoulder straps
- ⌘ Multiple external pockets
- ⌘ Skateboard straps
- ⌘ 42 litres



BROWN



BLACK

## INTERCEPTOR

AMBP10109

Dobby, Twill

PK 12

- ⌘ Large double zip pack
- ⌘ A4 compatible
- ⌘ Padded back
- ⌘ Padded Lap Top compartment
- ⌘ Airflow padded back
- ⌘ Felt-lined sunnies pocket
- ⌘ 40 litres



GREY



BLACK



MULTI



WHITE



BLUE



BLUE



RED



RED



BLUE

## SECTOR

AMBP09109

Dobby, Twill  
PK 12

- § Large double zip pack
- § A4 compatible
- § Padded back
- § Mobile phone pocket
- § External mesh pockets
- § Felt-lined sunnies pocket
- § 35 Litres

## COMMANDO

AMBP08109

600D Nylon/ Laminated polyester  
PK 12

- § Large double zip pack
- § A4 compatible
- § Padded back
- § Curved padded shoulder straps
- § ID label
- § Felt lined sunny pocket
- § 29 Litres

## DREDGIN

AMBP04109

600D Nylon  
PK 12

- § Mid size double zip wet/ dry pack
- § A4 compatible
- § Padded back
- § Curved padded shoulder straps
- § ID label
- § Protective rubber feet
- § Internal nylon wallet
- § 22 Litres

## ROAR

AMBP07109

600D Nylon  
PK 12

- § Mid size single zip
- § 1 main compartment with front pocket
- § A4 compatible
- § ID label

# GENUINE LEATHER WALLET



BLACK



BROWN



BLACK



BROWN



BROWN



BLACK

## MINIMALIST

OEAMWA2518

Leather  
PK 12

- s Tri-fold wallet
- s 8 card inserts
- s Calendar

## TOTALLY ORGANIZED

AMWA02109

Leather  
PK 12

- s Tri-fold wallet
- s 8 card inserts
- s printed O&E inside lining
- s Calendar

## MAXIMUS

AMWA14109

Leather  
PK 12

- s Bi-fold wallet
- s 5 credit card inserts
- s Multiple note compartments- 1 with zipper closure
- s Zip coin pocket
- s printed O&E inside lining
- s Calendar



BLACK



BLACK



BLACK/LIME



DK BROWN



DK BROWN



BROWN/GRAPE

ALL GENUINE LEATHER WALLETS  
COME WITH O&E PREMIUM  
PACKAGING BOXES



## GOOD KHARMA

AMWA06109

Leather

PK 12

- § Tri-fold wallet with clip closure & removable ID wallet
- § 3 Clear ID windows
- § 7 credit card inserts
- § Multiple note compartments- 1 with zipper closure
- § Zip coin pocket
- § printed O&E inside lining
- § Calendar

## FORMULA 1

AMWA07109

Leather

PK 12

- § Bi-fold wallet with removable internal wallet
- § 2 Clear ID windows
- § 7 credit card inserts
- § Multiple note compartments- 1 with zipper closure
- § Snap button coin pocket
- § printed O&E inside lining
- § Calendar

## KUNG POW

AMWA04109

Leather

PK 12

- § Bi-fold wallet with removable internal wallet
- § 2 mesh ID windows
- § 8 credit card inserts
- § Multiple note compartments- 1 with zipper closure
- § Zip coin pocket
- § printed O&E inside lining
- § Calendar

# BELTS



TAN

## LORDS RETURN

AMBT01109

Leather  
PK 6 - 1/S, 2/M, 2/L, 1/XL

- Single prong buckle
- Heat embossed belt



BLACK

DK BROWN

## BULL DUST

AMBT05109

Leather  
PK 12 Asst - 2/S, 4/M, 4/L, 2/XL

- Single prong buckle
- Australian Leather



BLACK



WHITE

## SLOTTED

AMBT02109

Imitation Leather

PK 12 Asst - 2/S, 4/M, 4/L, 2/XL

- ⊞ Detachable O&E buckle
- ⊞ Embossed belt



MULTI



YELLOW

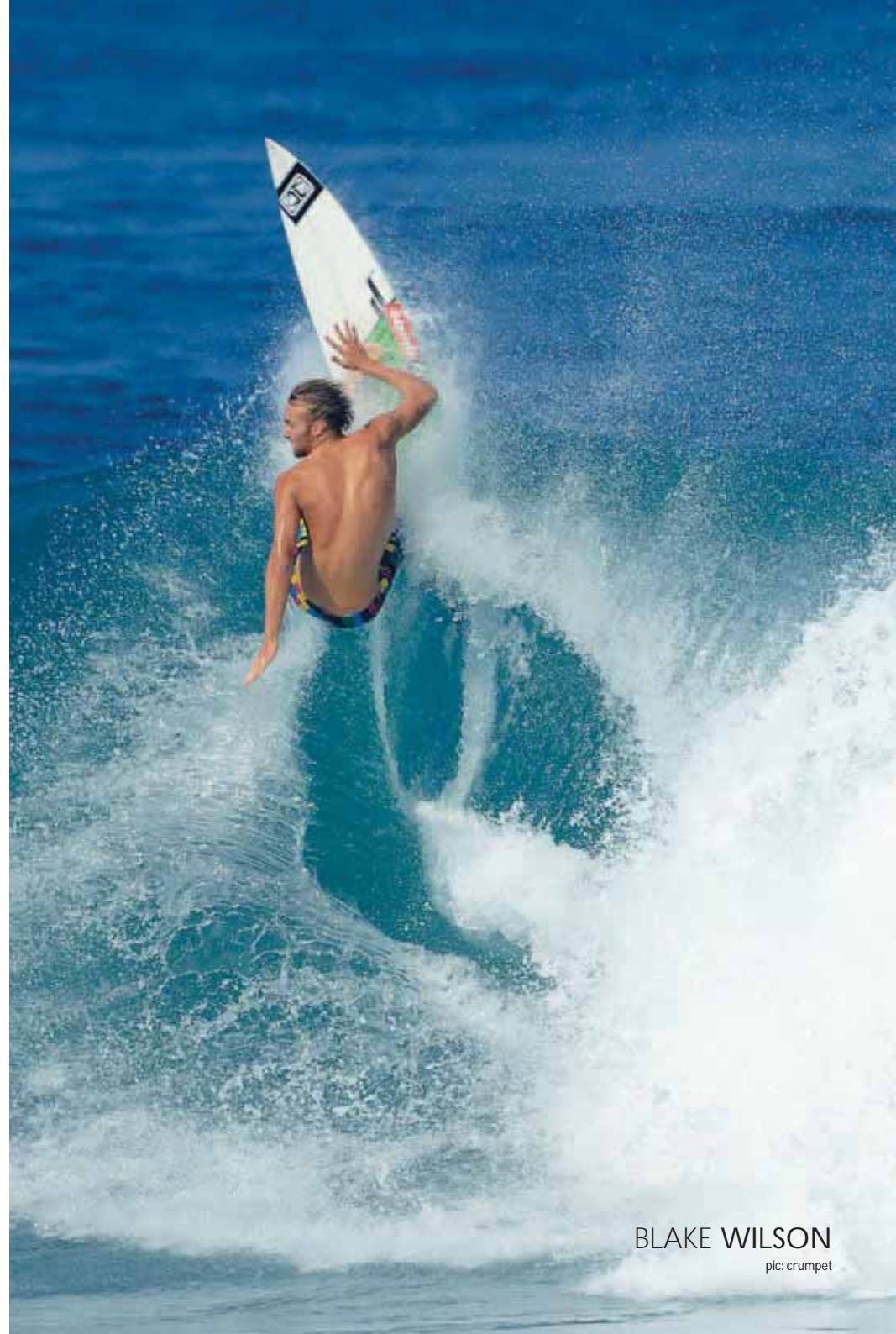
## AMIGOS

AMBT03109

PU

PK 12 Asst - 2/S, 4/M, 4/L, 2/XL

- ⊞ Single prong buckle
- ⊞ Printed belt



BLAKE WILSON

pic: crumpe

# CAPS



GREY



BLACK



BLACK



GREEN



RED

WHITE



GREY

**EVIL** URBAN FIT

AMCA01109  
Deluxe Brushed Twill  
PK 14 Asst - 4/S, 6/M 4/L

Ⓢ 6 Panel stretch fit

**SHADOW** STRETCH FIT

AMCA02109  
Mini Ottoman  
PK 14 Asst - 4/S, 6/M 4/L

Ⓢ 6 Panel stretch fit

**BULLSEYE** STRETCH FIT

AMCA03109  
Stripe Spandex  
PK 14 Asst - 4/S, 6/M 4/L

Ⓢ 6 Panel stretch fit





BLACK



MULTI



BROWN



WHITE

GREY



BLACK



BLACK

**INSIDER**

ADJUSTABLE FIT

AMCA06109

Brushed Cotton Twill  
PK 14 Asst - One Size Fits Most

s 6 Panel

**CREEPER**

ADJUSTABLE FIT

AMCA07109

108x56 Cotton & Mesh  
PK 14 Asst - One Size Fits Most

s 5 Panel

**BOOKIE**

AMCA12109  
Plaid Cotton  
PK 14 Asst - 4/S, 6/M 4/L

s Fitted



# CANE & SURF HATS



CREAM

## ASTAIRE

AMHA06109  
Twisted Paper  
PK 18 Asst - 6/S, 8/M, 4/L



NATURAL

## TROPPO

AMHA07109  
Rush Cane  
PK 18 Asst - 6/S, 8/M, 4/L



NATURAL

## LOBSTER

AMHA04109  
Rush Cane  
PK 18 Asst - 6/S, 8/M, 4/L



WHITE



NAVY

BLACK



NAVY

GREY

## INDO SURF HAT

SMHA02  
Nylon  
PK 12 Asst - 2/S, 4/M, 4/L, 2/XL

## MESH SURF HAT

SMHA01  
Nylon/ Mesh  
PK 12 Asst - One Size Fits Most

# TRAVEL NECESSITIES



## SURF CHECK 'N' SPY SCOPE

AMMC33  
 s Metal, Optic glass, plastic  
 PK 12. Black



## SURF CHECK 'N' BINOCULARS

AMMC32  
 s Metal, Optic glass, plastic  
 PK 12. Black



## CHORUS STUBBY HOLDER

AMMC02109  
 Neoprene  
 PK 12. Yellow



## WATER PROOF WALLET

AMWA28  
 Welded PVC  
 PK 12. Black



## WATER PROOF KEY POUCH

AMWA31  
 Welded PVC  
 PK 12. Black

# FOOTWEAR & SOX



BROWN



RED



WHITE



BROWN



BLACK



GREEN

## ALL TIME COLOURED

AMFW05109

Rubber

PK 14 Asst - 1/7, 2/8, 2/9, 3/10, 3/11, 2/12, 1/13

- ⊆ 100% Rubber Strap
- ⊆ O&E Moulded two tone sock & out sole

## REVENGE

AMFW06109

Rubber

PK 14 Asst - 1/7, 2/8, 2/9, 3/10, 3/11, 2/12, 1/13

- ⊆ 100% Rubber Strap
- ⊆ Generic sock & outsole with allover print

## CHOMPERS

AMFW02109

Rubber

PK 14 Asst - 1/7, 2/8, 2/9, 3/10, 3/11, 2/12, 1/13

- ⊆ 100% Rubber Strap
- ⊆ Generic sock & outsole with print



BROWN

### CHILLAXIN

AMFW09109

Leather

- Vegetable tanned leather taken from the centre of the hides for strength and softness. Tumbled in the dye drum with pumice then stretch before cutting to find any weak pieces before the cutting stage
- Printed sock & clear out sole with O&E print underneath

By Size - 7-14



### 5 PACK SPORT

AMXS01109

Cotton/ Polyester

PK 12 Asst- 7-11

### 5 PACK SPORT BIGFOOT

AOSX01109

Cotton/ Polyester

PK 12 Asst- 11-14



### 5 PACK ANKLE

AMXS02109

Cotton/ Polyester

PK 12 Asst- 7-11

### 5 PACK ANKLE BIGFOOT

AOSX02109

Cotton/ Polyester

PK 12 Asst- 11-14



### 5 PACK SUIT

AMXS03109

Cotton/ Polyester

PK 12 Asst- 7-11

# TOWELS & KEYRINGS



BLACK

## POP

AMTW01109  
Cotton Velour  
PK 12

s 90cm x 170cm



BLACK

## RAMPAGE

AMTW02109  
Cotton Velour  
PK 12

s 80cm x 160cm



## TEAM GRIP

AMKR05109  
PVC  
PK 12



## TAG BOTTLE OPENER

AMKR02109  
s Plastic/ Metal  
PK 12



## GO AUSSIE

AMKR03109  
PVC  
PK 12

# MASKS & GOGGLES



**FREE DIVE MASK**

AMMC13  
s Silitex  
PK 6



**ATOLL SILICON MASK**

AMMC15  
s Silicon  
PK 6

**FREE DIVE MASK BOYS**

AMMC14  
Silitex  
PK 6



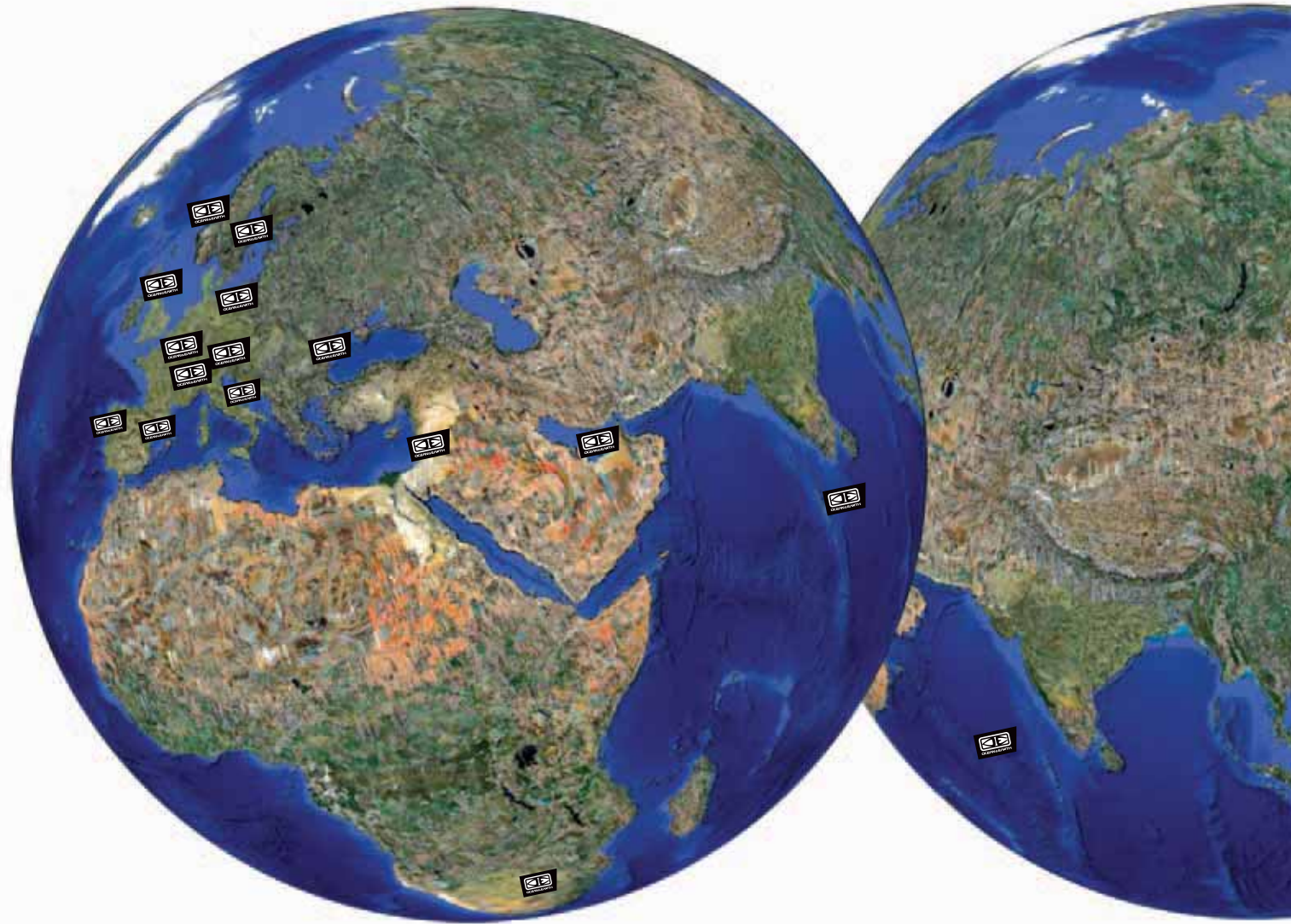
**SWIM GOGGLES**

AMMC38  
s Silicon  
PK 6



OCEAN &  
EARTH  
INTERNATIONAL

**OCEAN & EARTH**  
EST. 1979



AUSTRALIA  
AUSTRIA  
BULGARIA  
CANADA  
CHILE  
COOK ISLANDS  
CANARY ISLANDS

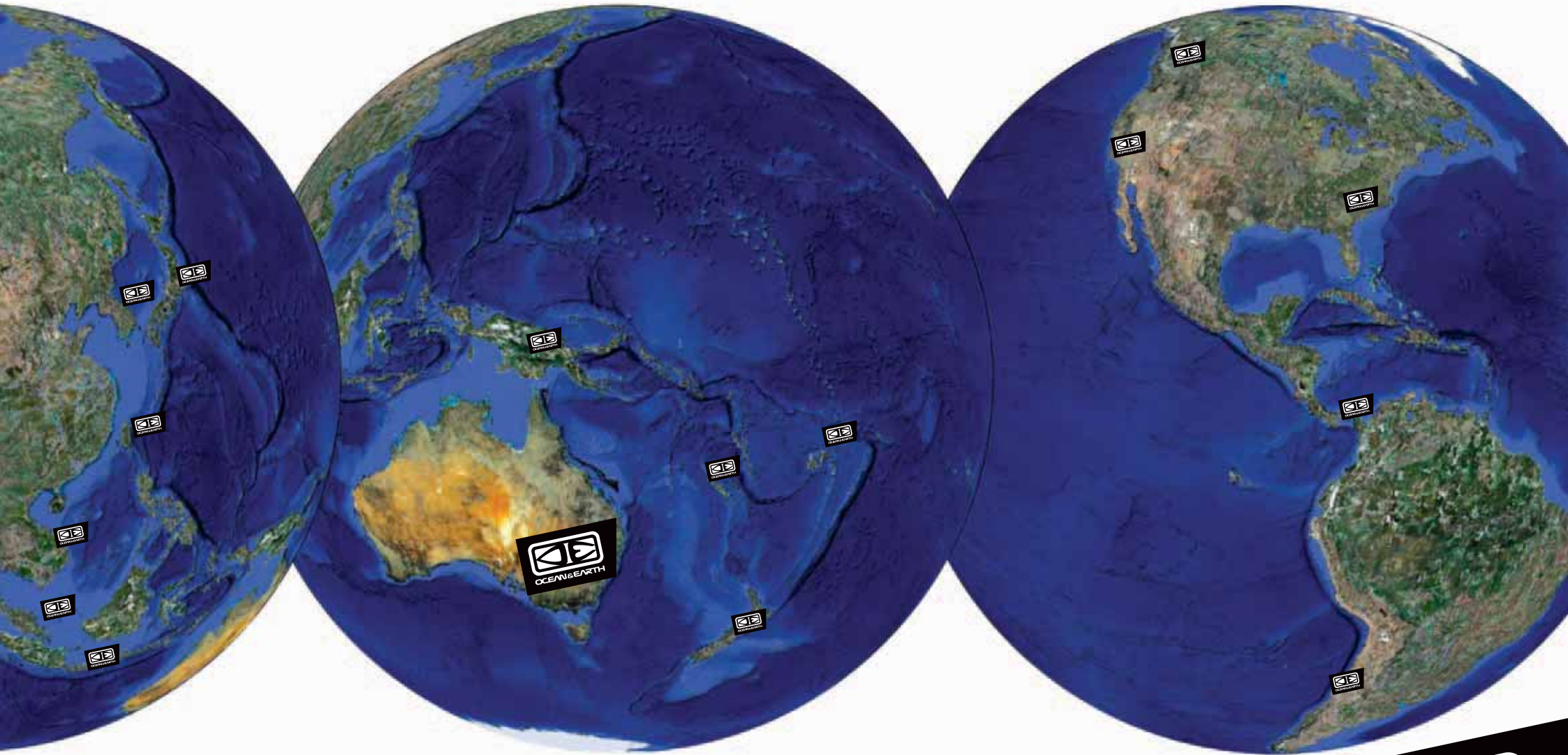
DUBAI  
FIJI  
FRANCE  
GERMANY  
GUAM  
INDONESIA  
ISRAEL

ITALY  
JAPAN  
KOREA  
MALDIVES  
NEW ZEALAND  
NORWAY  
PAPUA NEW GUINEA

PANAMA  
PORTUGAL  
SINGAPORE  
SOUTH AFRICA  
SPAIN  
SWEDEN  
SWITZERLAND

TAIWAN  
UNITED KINGDOM  
USA





Ocean & Earth International  
Contact: Paul Munten, CEO  
(+61)414 210 222  
paul@oceanearth.com

12 The Springs Road  
PO Box 22  
Sussex Inlet NSW 2540  
w: oceanearth.com  
p: 61 2 4441 2482  
f: 61 2 4441 1212



MENS SUMMER 2010



SHOP		ORDER		USE THIS SIZE GRID TO ORDER BY SIZE OR YOUR PACK BREAK											
DELIVERY DATE		MENS BOTTOMS		30	32	33	34	36	38						
Signature		MENS TOPS		S	M	L	XL								
CODE	DESCRIPTION	COLOUR		OR YOUR REQUESTED PACK BREAK OR BY SIZE BY COLOUR						TOTALS pcs	HEK €	EVK €	TOTAL COSTS		
MENS BOARDIES				30	32	33	34	36	38	TOTAL					
CMBS11309	Mens Warp F/Flex	Brown										59,95 €			
	Mens Warp F/Flex	Black										59,95 €			
CMBS99309	Mens Warp F/Flex (SL)	Brown										59,95 €			
	Mens Warp F/Flex (SL)	Black										59,95 €			
CMBS15309	Mens Noisy F/Flex	Navy										64,95 €			
	Mens Noisy F/Flex	Black										64,95 €			
CMBS09309	Mens Wake Up F/Flex	Black										59,95 €			
	Mens Wake Up F/Flex	White										59,95 €			
CMBS06309	Mens Xray F/Flex	Coffee										59,95 €			
	Mens Xray F/Flex	Black										59,95 €			
CMBS13109	Mens Tell Tails	Black										59,95 €			
CMBS01109	Mens Priority	Black										44,95 €			
	Mens Priority	Blue										44,95 €			
	Mens Priority	Inc										44,95 €			
CMBS04309	Mens Tip Off	White										49,95 €			
	Mens Tip Off	Black										49,95 €			
CMBS03309	Mens All Rounder	Navy										44,95 €			
	Mens All Rounder	Black										44,95 €			
	Mens All Rounder	Grey										44,95 €			
CMBS16309	Mens Savannah	Blue										49,95 €			
CMBS17109	Mens Depth Charger	Blue										64,95 €			
CMBS08309	Mens Botton Line	Black										59,95 €			
CMBS10309	Mens Species	Red										59,95 €			
	Mens Species	Green										59,95 €			
CMBS95309	Mens Species (SL)	Red										59,95 €			
	Mens Species (SL)	Green										59,95 €			
CMBS07309	Mens Impression	Red										64,95 €			
	Mens Impression	Blue										64,95 €			
PRINT TEES				S	M	L	XL					TOTAL			
CMTS05309	Mens Priority	Ice										29,95 €			
	Mens Priority	Green										29,95 €			
	Mens Priority	Navy										29,95 €			
	Mens Priority	Charcoal										29,95 €			
CMTS07309	Mens Awol	White										29,95 €			
	Mens Awol	Black										29,95 €			
	Mens Awol	Ash										29,95 €			
CMTS29309	Mens Escape	Mist										29,95 €			
	Mens Escape	Charcoal										29,95 €			
CMTS31309	Mens Misfit	Ice										29,95 €			
	Mens Misfit	Charcoal										29,95 €			
CMTS04309	Mens Crossroad	Black										29,95 €			
	Mens Crossroad	Light Grey Marle										29,95 €			
CMTS21309	Mens Visionary	Charcoal										29,95 €			
	Mens Visionary	White										29,95 €			
CMTS13309	Mens Patriot	Navy										29,95 €			
CMTS10309	Mens Bones	Grey										29,95 €			
	Mens Bones	Charcoal										29,95 €			
CMTS01309	Mens Aquarium	White										34,95 €			
CMTS26309	Mens Abort	Brown										34,95 €			
	Mens Abort	Navy										34,95 €			
CMTS23309	Mens Vicious	White										34,95 €			
	Mens Vicious	Ash										34,95 €			
CMTS03309	Mens Extension	Green										34,95 €			
	Mens Extension	Navy										34,95 €			
CMTS27309	Mens Ransome	Mist										29,95 €			
MENS POLOS				S	M	L	XL					TOTAL			
CMPO01309	Mens Skew	White										39,95 €			
	Mens Skew	Navy										39,95 €			
CMPO02309	Mens Glory	White										39,95 €			
	Mens Glory	Navy										39,95 €			
MENS SHIRTS				S	M	L	XL					TOTAL			
CMSH2309	Mens Gridlock	Black										49,95 €			
	Mens Gridlock	White										49,95 €			



	Good Karma	Dk Brown		
AMWA07109	Formula 1	Black		
	Formula 2	Dk Brown		
<b>BELLTS</b>				
AMBT01109	Lords Return	Tan		
AMBT05109	Bull Dust	Black		
	Bull Dust	Dk Brown		
AMBT02109	Slotted	Black		
	Slotted	White		
AMBT03109	Amigos	Multi		
	Amigos	Yellow		
<b>CAPS</b>				
AMCA1109	Evil	Grey		
	Evil	Green		
AMCA02109	Shadow	Black		
	Shadow	Red		
	Shadow	White		
AMCA03109	Bullseye	Black		
	Bullseye	Grey		
AMCA06109	Insider	Black		
	Insider	White		
	Insider	Grey		
AMCA07109	Creeper	Multi		
	Creeper	Black		
AMCA12109	Bookie	Brown		
	Bookie	Black		
<b>CANE HATS</b>				
AMHA06109	Astaire	Cream		
AMHA07109	Troppo	Natural		
AMHA04109	Lobster	Natural		
SMHA02	Indo Surf Hat	White		
	Indo Surf Hat	Navy		
	Indo Surf Hat	Grey		
SMHA01	Mesh Surf Hat	Navy		
	Mesh Surf Hat	Black		
<b>TRAVEL NECESSITIES</b>				
AMMC02109	Chorus	Yellow		
AMWA28	Water Proof	Black		
AMWA31	Water Proof	Black		
AMMC32	Surf Check'n'	Black		
AMMC33	Surf Check'n'	Black		
<b>THONG</b>				
			sizes	
			7	8
			9	10
			11	12
			13	PACK
AMFW05109	All Time Colouroured	Brown	pack of 14 assorted size 7-13	
	All Time Colouroured	Red	pack of 14 assorted size 7-13	
AMFW06109	Revenge	White	pack of 14 assorted size 7-13	
	Revenge	Brown	pack of 14 assorted size 7-13	
AMFW02109	Chompers	Black	pack of 14 assorted size 7-13	
	Chompers	Green	pack of 14 assorted size 7-13	
AMFW09109	Chillixin	Brown		
<b>SOX</b>				
AMX01109	5 Pack Sport			
AOSX01109	5 Pack Sport			
AMX02109	5 Pack Ankle			
AOSX02109	5 Pack Ankle			
AMX03109	5 Pack Suit			
<b>TOWELS</b>				
AMTW01109	Pop	Black		
AMTW02109	Rampage			
<b>KEYRINGS</b>				
AMKR02109	Tag Bottle Opener			
AMKR03109	Go Aussie PVC			
AMKR05109	Team Grip PVC			
<b>MASK &amp; GOGGLES</b>				
AMMC13	Free Dive Mask			
AMMC15	Atoll Silicon Mask			
AMMC38	Swim Goggles			

pack of 6		min order 6				49,95 €
pack of 6		min order 6				49,95 €
pack of 6		min order 6				49,95 €
<b>NONE</b>						
PACK OF 6 1S/2M/2L/1XL		min order 6				44,95 €
PACK OF 6 1S/2M/2L/1XL		min order 6				29,95 €
PACK OF 6 1S/2M/2L/1XL		min order 6				29,95 €
PACK OF 6 1S/2M/2L/1XL		min order 6				44,94 €
PACK OF 6 1S/2M/2L/1XL		min order 6				44,94 €
PACK OF 6 1S/2M/2L/1XL		min order 6				29,95 €
PACK OF 6 1S/2M/2L/1XL		min order 6				29,95 €
<b>NONE</b>						
pack of 6 2S/3M/2L		min order 6				24,95 €
pack of 6 2S/3M/2L		min order 6				24,95 €
pack of 6 2S/3M/2L		min order 6				24,95 €
pack of 6 2S/3M/2L		min order 6				24,95 €
pack of 6 2S/3M/2L		min order 6				24,95 €
pack of 6 2S/3M/2L		min order 6				24,95 €
pack of 6		min order 6				19,95 €
pack of 6		min order 6				19,95 €
pack of 6		min order 6				19,95 €
pack of 6		min order 6				24,95 €
pack of 6		min order 6				24,95 €
pack of 6 2S/3M/2L		min order 6				24,95 €
pack of 6 2S/3M/2L		min order 6				24,95 €
<b>NONE</b>						
pack of 9 3S/4M/2L		min. order 9				24,95 €
pack of 9 3S/4M/2L		min. order 9				19,95 €
pack of 9 3S/4M/2L		min. order 9				19,95 €
pack of 6 1S/2M/2L/1XL		min. order 6				22,50 €
pack of 6 1S/2M/2L/1XL		min. order 6				22,50 €
pack of 6 1S/2M/2L/1XL		min. order 6				22,50 €
pack of 6 1S/2M/2L/1XL		min. order 6				19,95 €
pack of 6 1S/2M/2L/1XL		min. order 6				19,95 €
<b>NONE</b>						
						7,50 €
						11,95 €
						11,95 €
						29,95 €
						29,95 €

ZAHLUNGSBEDINGUNGEN: 30 TAGE NETTO, 10 TAGE 3%, BEZ 4%, alle angegebenen Preise netto ohne Mwst.

GTA DISTRIBUTION OHG, FRANZISUSSTRASSE 6A, 60314 FRANKFURT, GERMANY TEL +49 (0)69 943402-0 FAX +49 (0)69 943402-90